

Bushing

Weima Original

B21—Bushing, Valve Rod

The stem reducer joint is a standard part of the sucker rod pump and connects the upper stem of the plunger to the rod string. The connecting part with the valve stem is the key to the structure of the product. The more likely problem to occur is the breaking off of the connecting valve stem. Therefore, its material's selection and structural strength's design need to fully consider the product's operating environment

Valve rod	Sucker rod	Part No.	API No.	Lq, mm
11/16"	5/8"	B21-15(XX)	B21-15	19.10
11/16"	3/4"	B21-20(XX)	B21-20	19.10
7/8"	3/4"	B21-25(XX)	B21-25	19.10
7/8"	7/8"	B21-25(XX)-7/8	—	19.10
1 1/16"	3/4"	B21-30(XX)	B21-30	19.10
1 1/16"	7/8"	B21-30(XX)-7/8	—	19.10
1 1/16"	1"	B21-30(XX)-1	—	19.10
1 1/4"	1"	B21-40(XX)-1	—	19.10



Note:

- 1) "XX" is Material identification symbol;
- 2) Lq is the counterbore depth at the thread end of the pipeline.

B21M—Bushing, Valve Rod

Valve rod	Sucker rod	Part No.	API No.	Lq, mm
11/16"	5/8"	B21M-15(XX)	B21M-15	38.10
11/16"	3/4"	B21M-20(XX)	B21M-20	38.10
7/8"	3/4"	B21M-25(XX)	B21M-25	38.10
7/8"	7/8"	B21M-25(XX)-7/8	—	38.10
1 1/16"	3/4"	B21M-30(XX)	B21M-30	38.10



1 1/16"	7/8"	B21M-30(XX)-7/8	—	38.10
1 1/16"	1"	B21M-30(XX)-1	—	38.10
1 1/4"	1"	B21M-40(XX)-1	—	38.10

Note:

- 1) "XX" is Material identification symbol;
- 2) Lq is the counterbore depth at the thread end of the pipeline. The increase in Lq length effectively reduces the occurrence of fractures at the valve rod threads, suitable for deep well and high SPM well.



B21Q—Bushing, Valve rod, Collet Type

Valve rod	Sucker rod	Part No.	API No.
1 1/16"	3/4"	B21Q-20(XX)	—
7/8"	3/4"	B21Q-25(XX)	—
7/8"	7/8"	B21Q-25(XX)-7/8	—
1 1/16"	3/4"	B21Q-30(XX)	—
1 1/16"	7/8"	B21Q-30(XX)-7/8	—
1 1/16"	1"	B21Q-30(XX)-1	—
1 1/4"	1"	B21Q-40(XX)-1	—
1 1/2"	1"	B21Q-40(XX)-A	—



Note:

- 1) "XX" is Material identification symbol;
- 2) The product structure can effectively avoid the occurrence of detachment and fracture of the valve rod thread, and it is applied well in deep wells and high SPM wells.

B22—Bushing, Seat, Barrel Cage

Barrel hood reducer joint is a standard part on rod pump. The upper end

is used for pressing the fixed valve seat, and the lower end can be connected with the screen tube and other devices. In some Wells with deep pump connections, the strength of the upper thread connection needs to be considered.

Box end	Part No.	API No.
3/4"LP	B22-15(XX)	B22-15
1"LP	B22-20(XX)	B22-20
1 1/4"LP	B22-25(XX)	B22-25
1 1/2"LP	B22-30(XX)	B22-30
2"	B22-40(XX)	—

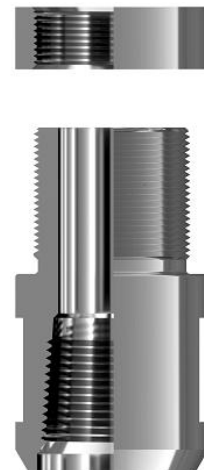


Note:

- 1) "XX" is Material identification symbol.

B22—Bushing, Seat, Barrel Cage, With Lock Nut

Box end	Part No.	API No.
3/4"LP	B22-15(XX)	B22-15
1"LP	B22-20(XX)	B22-20
1 1/4"LP	B22-25(XX)	B22-25
1 1/2"LP	B22-30(XX)	B22-30
2"	B22-40(XX)	—



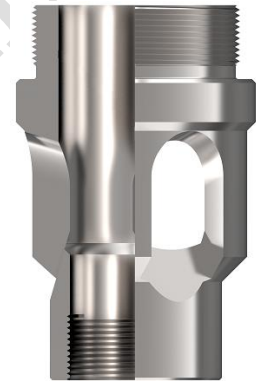
Note:

- 1) "XX" is Material identification symbol.

- 2) With lock nut, application effect is obvious in the deep pumping well and high SPM well.

B23—Bushing, Cage Connected with Puller

Hood reducer joints with pullers are standard on tubular pumps. The upper part of the piston is pressed against the lower traveling valve seat, and the lower part is connected with the fixed valve puller. For 4 1/2x3 3/4 pumps only, use P31-275 puller instead of P31-375 puller.



Part No.	API No.
B23-40(XX)	B23-40

Note:

- 1) “XX” is Material identification symbol.

1. Bushing Material

Identification Symbol	Name	Base core hardness	Base material	Base Material Min. Yield Strength MPa (ksi)
A1	Steel	90HRB~23HRC	UNS G10XX0	345 (50)
A2	Low Alloy Steel	90HRB~23HRC	UNS G41XX0	345 (50)
A3	Low Alloy Steel	90HRB~23HRC	UNS G86XX0	345 (50)
A4	Ni/Cu Alloy	83HRB~23HRC	UNS N04400	345 (50)
C5	Brass	60HRB~90HRB	UNS C46400	276 (40)
C6	Stainless Steel	79HRB~23HRC	UNS S30400	241 (35)



威马股份
WEIMA OIL & GAS LIFTING

Tel: 0086 531-75919863

Fax: 0086 531-78856601

Website: www.sdweima.com

Email: weima@sdweima.com



WEIMA
OIL & GAS LIFTING

Shandong Weima Pumps Manufacturing Co., Ltd

Weima Original